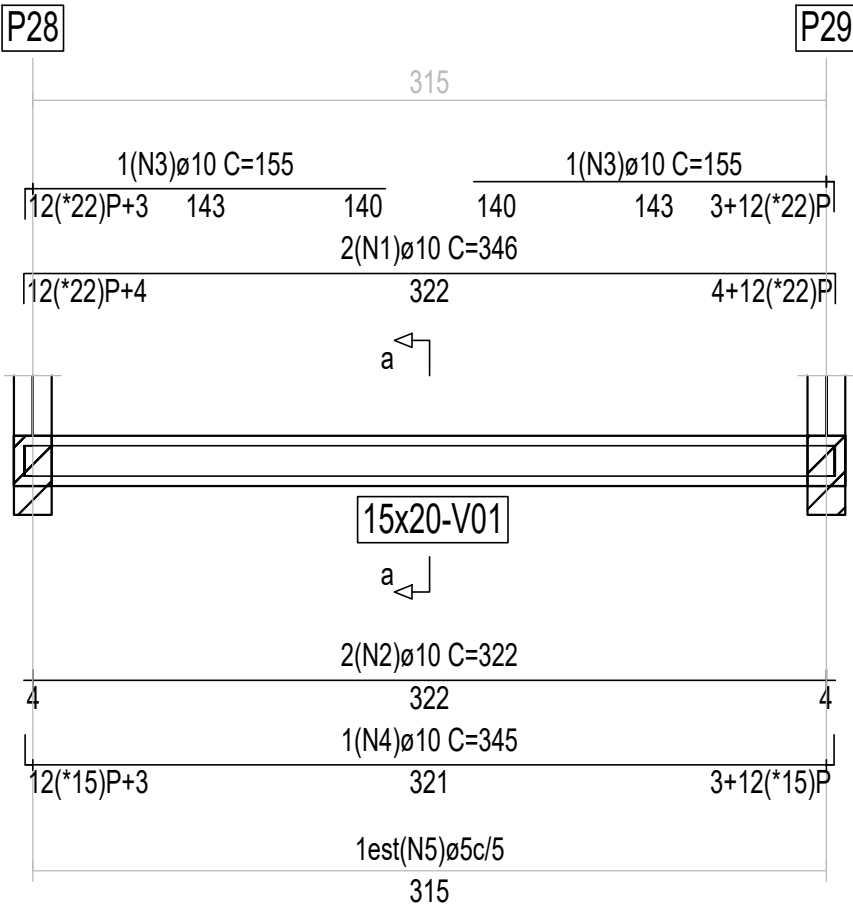
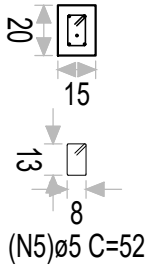


V01

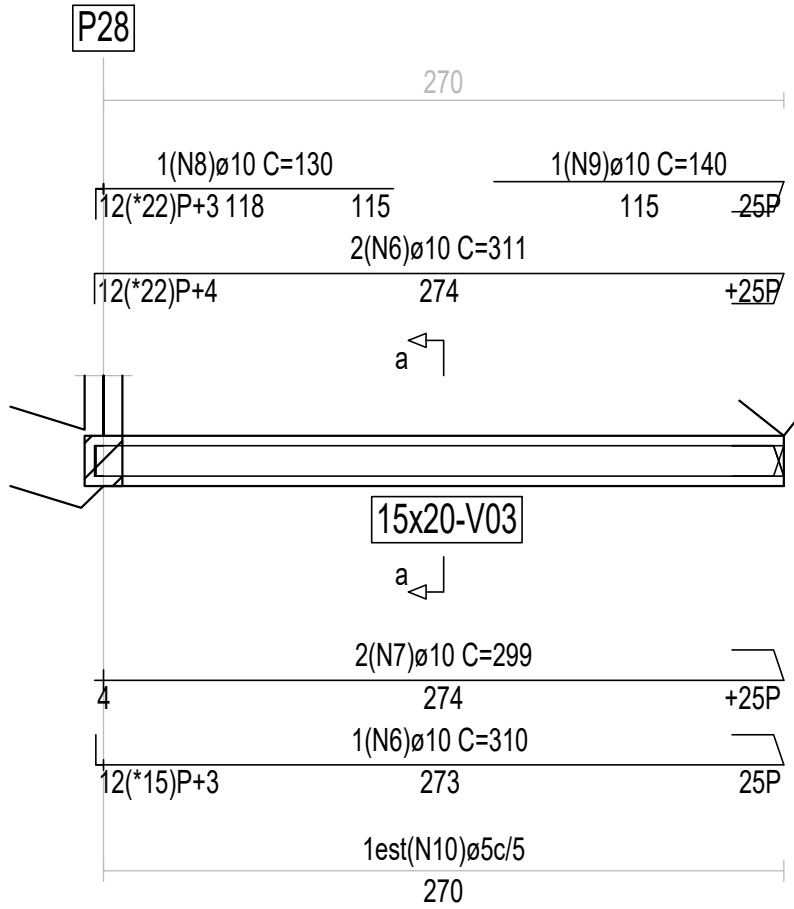


Corte a
Escala: 1/100

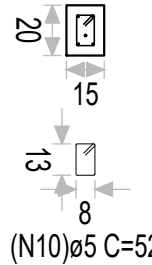


Barra	ID	Qt.	Diâm.	Comprimento unitário (cm)		Total			
				P	C. Reto	P	C. Total	(cm)	(kg)
V01	Vigas fora do pórtico			Aço CA-50 N 5098 Kg/cm2					
	1	2	ø10	12	322	12	346	692	4,403
	2	2	ø10		322		322	644	4,098
	3	2	ø10	12	143		155	310	1,972
	4	1	ø10	12	321	12	345	345	2,195
	5	62	ø5				52	3224	5,128
Total+10,0%								19,576	

V03

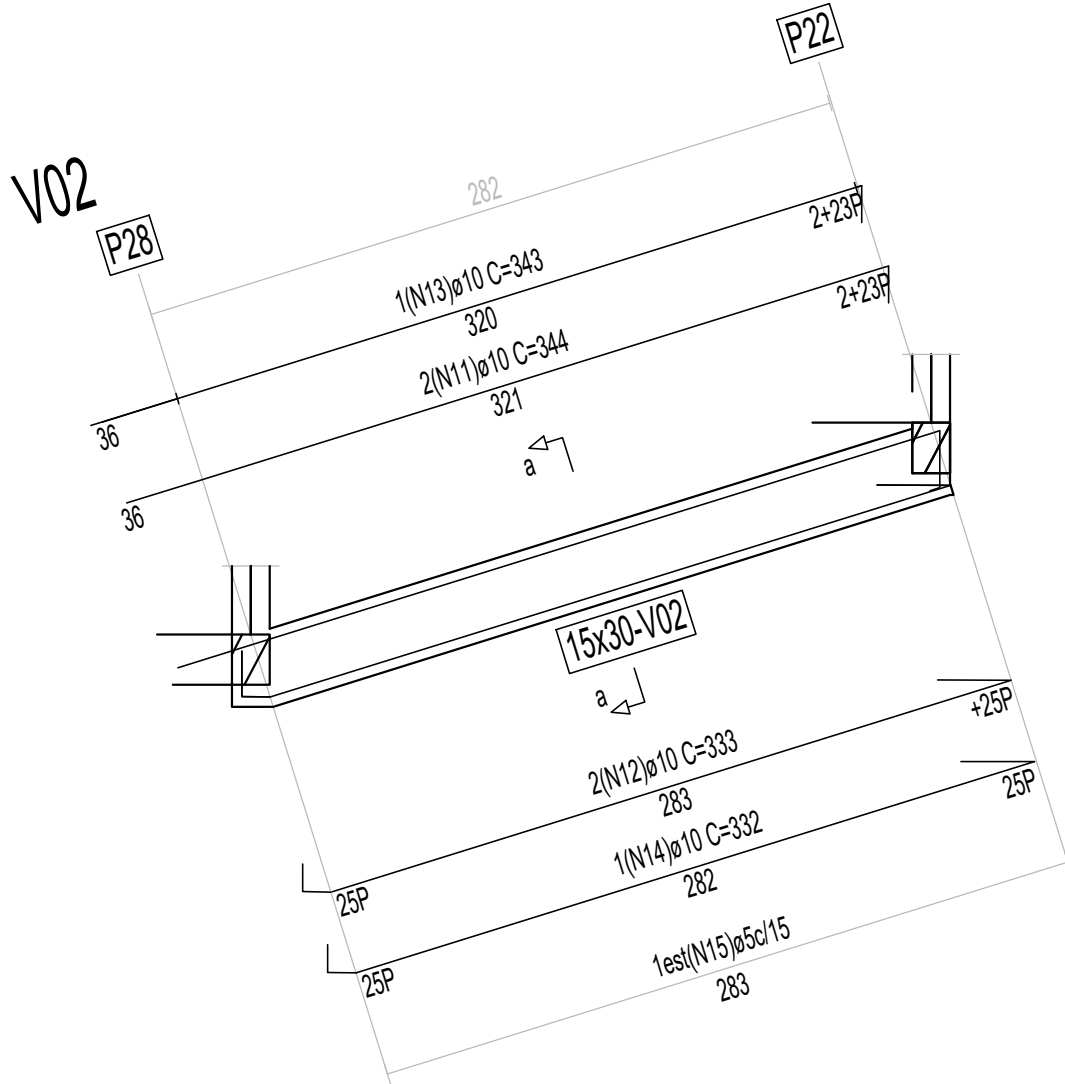


Corte a
Escala: 1/100

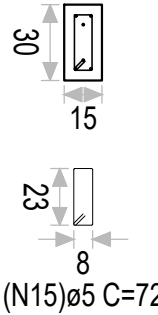


Barra	ID	Qt.	Diâm.	Comprimento unitário (cm)				Total	
				P	C. Reto	P	C. Total	(cm)	(kg)
V03	6	3	ø10	12	274	25	311	933	5,936
	7	2	ø10		274	25	299	598	3,805
	8	1	ø10	12	118		130	130	0,827
	9	1	ø10		115	25	140	140	0,891
	10	53	ø5				52	2756	4,384
Total+10,0%								17,428	

V02

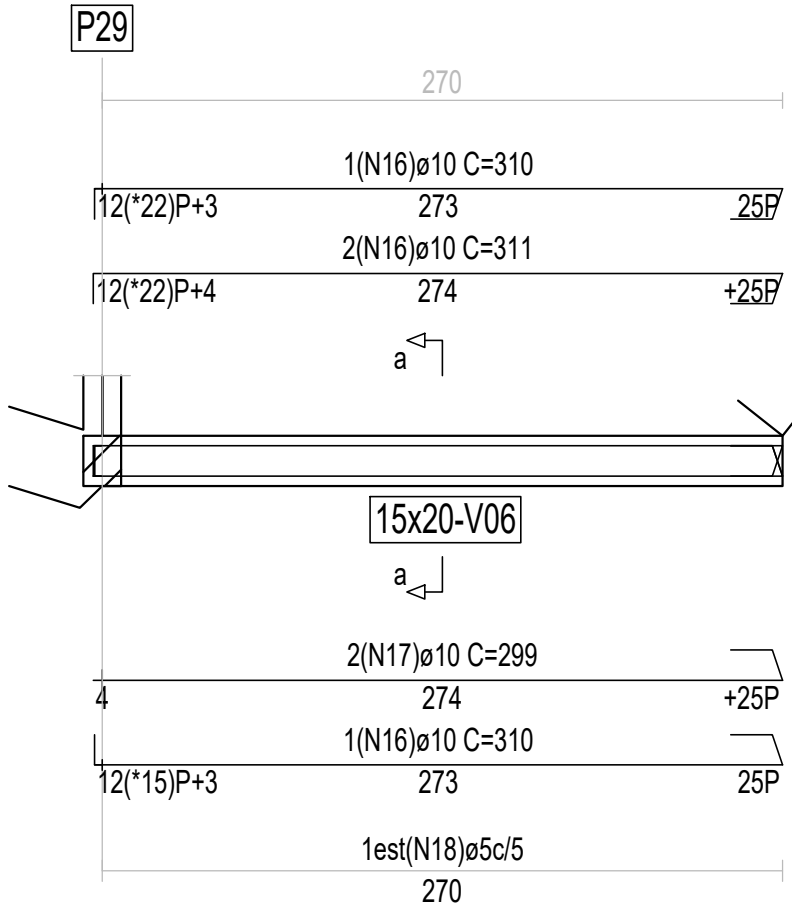


Corte a
Escala: 1/100

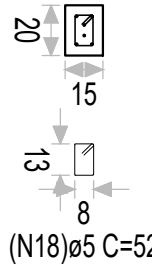


Barra	ID	Qt.	Diâm.	Comprimento unitário (cm)				Total	
				P	C. Reto	P	C. Total	(cm)	(kg)
V02	11	2	ø10		321	23	344	688	4,378
	12	2	ø10	25	283	25	333	666	4,238
	13	1	ø10		320	23	343	343	2,182
	14	1	ø10	25	282	25	332	332	2,112
	15	20	ø5				72	1440	2,291
								Total+10,0%	16,721

V06



Corte a
Escala: 1/100



Barra	ID	Qt.	Diâm.	Comprimento unitário (cm)				Total	
				P	C. Reto	P	C. Total	(cm)	(kg)
V06	16	4	ø10	12	274	25	311	1244	7,915
	17	2	ø10		274	25	299	598	3,805
	18	53	ø5				52	2756	4,384
	Total+10,0%							17,715	

DETALHADOS :
DETALHES DAS ARMADURAS DAS PLANO 97.560

ESCALA 1 : 30

07/28